



**FITTING INSTRUCTIONS FOR RAD0247 RADIATOR GUARD
FOR BMW S1000RR '19-**



**THIS KIT CONTAINS THE ITEMS PICTURED AND LABELLED BELOW.
DO NOT PROCEED UNTIL YOU ARE SURE ALL PARTS ARE PRESENT.**

PLEASE NOTE THAT THE WAY THE KIT IS PACKED DOES NOT NECESSARILY REPRESENT THE WAY OF MOUNTING TO THE BIKE

PLEASE NOTE THAT IN CASES WHERE KITS ARE PACKED WITH RUBBER WASHERS HOLDING THE COMPONENTS ONTO THE BOLT – *THE RUBBER WASHERS SHOULD BE THROWN AWAY!*

THE PARTS SHOWN MAY BE REPRESENTATIVE ONLY (FOR CLARITY OF INSTRUCTIONS ONLY)

DIGITAL COPIES OF THESE INSTRUCTIONS ARE AVAILABLE TO DOWNLOAD FROM WWW.RG-RACING.COM

GENERAL TORQUE SETTINGS

M4 BOLT = 8Nm
M5 BOLT = 12Nm
M6 BOLT = 15Nm
M8 BOLT = 20Nm
M10 BOLT = 40Nm

TOOLS REQUIRED

- T25 Torx Key/Socket

THIS KIT CONTAINS:

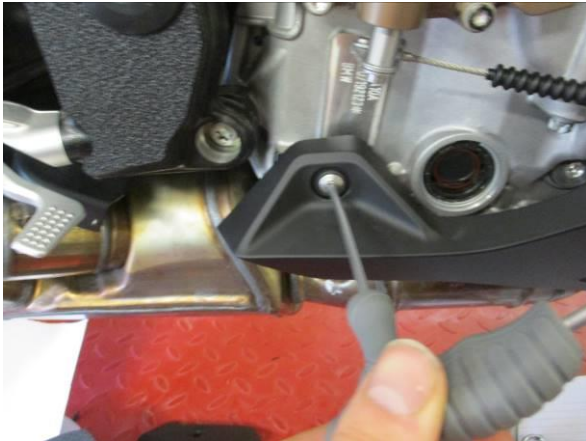
- Item 1 = 1x RADIATOR GUARD (RAD0247)
- Item 2 = 8x 100mm LENGTHS OF SELF-ADHESIVE FOAM
- Item 3 = 4x 220mm LONG CABLE TIES

R&G

Unit 1, Shelley's Lane, East Worldham, Alton, Hampshire, GU34 3AQ
Tel: +44 (0)1420 89007 Fax: +44 (0)1420 87301 www.rg-racing.com Email: info@rg-racing.com



FITTING INSTRUCTIONS



Picture 1



Picture 2



Picture 3



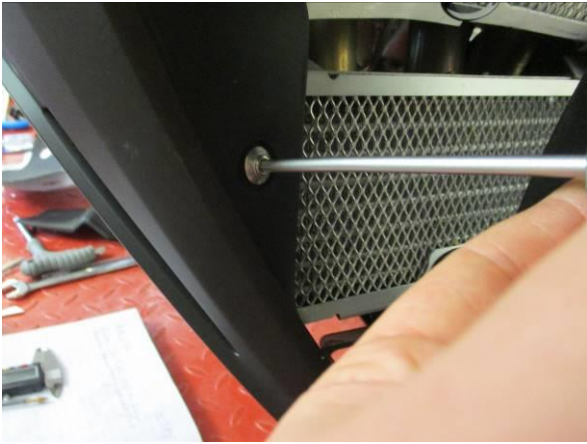
Picture 4



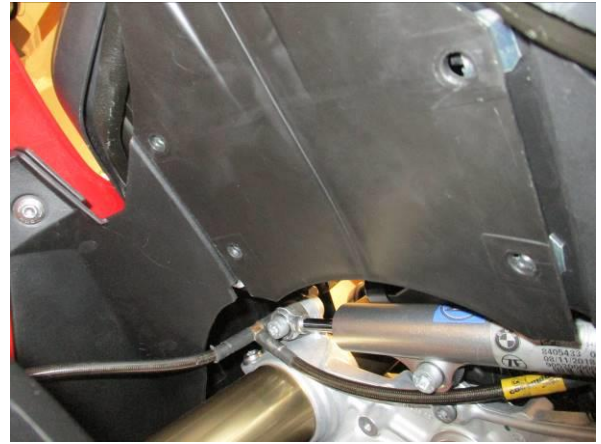
Picture 5



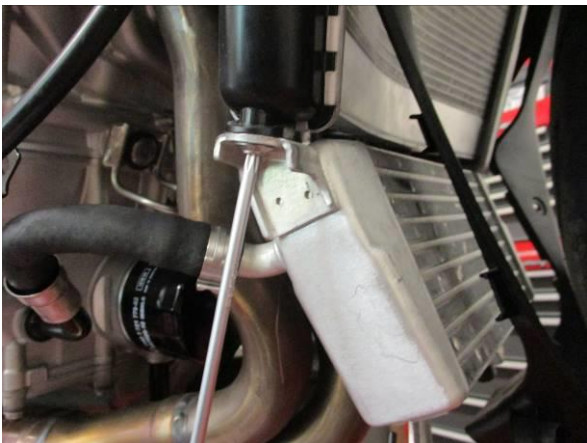
Picture 6



Picture 7



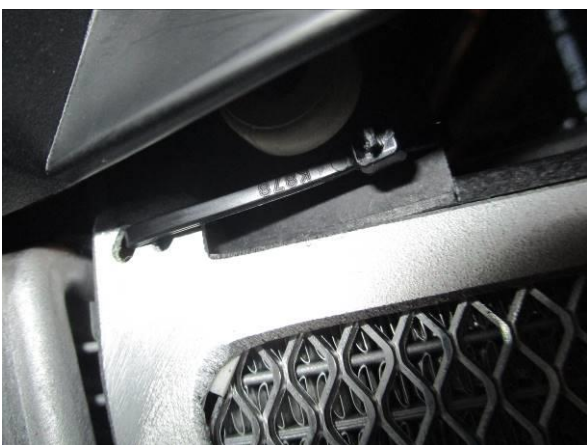
Picture 8



Picture 9



Picture 10



Picture 11



Picture 12



- Starting on the right-hand side of the bike, remove the 5x fairing bolts shown in pictures 1-5 using a T25 Torx key/socket.
- Using the same tool for all remaining steps, remove the bolt securing the two sides of the fairing together, as shown in picture 6.
- Remove the 4x lower inner fairing bolts as shown in picture 7, then the 4x upper inner fairing bolts as shown in picture 8.
- Gently remove the RHS fairing, then repeat previous steps for the LHS fairing.
- Remove the 2x bolts joining the radiator guard to the oil cooler, as shown in picture 9.
- Arrange and fix the strips of protective foam (item 2) to the inner frame of the radiator guard (item 1), then offer the guard up to the radiator.
- Position the radiator guard tabs between the radiator and oil cooler joining points as shown in picture 10, then secure with the original bolts.
- Secure the top corners of the radiator guard by threading a cable tie (item 3) through the guard's upper securing slots and looping them around the radiator mounting points, as shown in picture 11.
- Refit all panels.

ISSUE 1 - 15/07/2019 (FB)

CONSUMER NOTICE

The catalogue description and any exhibition of samples are only broad indications of the Products and R&G may make design changes which do not diminish their performance or visual appeal and supplying them in such state shall conform to the order. The Buyer acknowledges no representation or warranty (other than as to title) has been given or will apply to the Products other than those in R&G's order or confirmation and the Buyer confirms it has chosen the Products as being of merchantable quality and suitable for its particular purposes. Where R&G fits the Products or undertakes other services it shall exercise reasonable skill and care and rectify any fault free of charge unless the workmanship has been disturbed. The Buyer is responsible for ensuring that the warranty on the motorcycle is not affected by the fitting of the Products. On return of any defective Products R&G shall at its option either supply a replacement or refund the purchase money but shall not be liable if the Products have been modified or used or maintained otherwise than in accordance with R&G's or manufacturer's instructions and good engineering practice or if the defect arises from accident or neglect. Other than identified above and subject to R&G not limiting its liability for causing death and personal injury, it shall not be liable for indirect or consequential loss and otherwise its liability shall be limited to the amounts paid by the Buyer for the Products or the fitting or service concerned. These terms do not affect the Buyer's statutory rights.

R&G RACING RETURNS POLICY (NON-FAULTY GOODS)

Returns must be pre-authorized (if not pre-authorized the return will be rejected). Goods may only be returned direct to us if they were purchased direct from us (customer must prove if necessary). Otherwise to be returned to original vendor. Goods must be in re-sellable condition, in the opinion of R&G Racing. All returns are subject to a 25% restocking and handling fee (25% of the gross value exc. P&P – at the prevailing price at time of purchase). The customer must pay any and all carriage charges. No returns of discontinued products, unless within 14 days of purchase. This policy does not affect your statutory rights and does not refer to faulty goods.

R&G

Unit 1, Shelley's Lane, East Worldham, Alton, Hampshire, GU34 3AQ

Tel: +44 (0)1420 89007 Fax: +44 (0)1420 87301 www.rg-racing.com Email: info@rg-racing.com



NOTICE DE MONTAGE POUR RAD0247 GRILLE DE PROTECTION RADIATEUR POUR BMW S1000RR '19-

**LE KIT CONTIENT LES ARTICLES EXPOSÉS CI-DESSOUS, VÉRIFIER QUE TOUTES LES PIÈCES SOIENT PRÉSENTES
AVANT DE PROCÉDER AU MONTAGE.**

**LA FAÇON DONT LE KIT EST EMBALLÉ NE CORRESPOND PAS FORCÉMENT À LA FAÇON DE MONTER LES
PIÈCES SUR LA MOTO.**

NOTEZ QUE SI LES KITS SONT EMBALLÉS AVEC DES RONDELLES EN CAOUTCHOUC SERVANT À TENIR LES
COMPOSANTS, *CES RONDELLES DOIVENT ÊTRE JETÉES!*

**LES PARTIES PRÉSENTÉES PEUVENT ÊTRE UNIQUEMENT REPRESENTATIVES
(POUR LA CLARTE DES INSTRUCTIONS UNIQUEMENT)**

Notice disponible au téléchargement sur WWW.RG-RACING.COM

VALEURS DE SERRAGE RECOMMANDÉES

M4 BOULON = 8Nm
M5 BOULON = 12Nm
M6 BOULON = 15Nm
M8 BOULON = 20Nm
M10 BOULON = 40Nm

OUTILS REQUIS

- Clé Torx T25

LE KIT CONTIENT :

Article 1 = 1x GRILLE DE PROTECTION RADIATEUR (RAD0247)
Article 2 = 8x 100mm LONGUEURS DE MOUSSE AUTOCOLLANTES
Article 3 = 4x 220mm COLLIERS DE SERRAGE

NOTICE DE MONTAGE

- En partant du côté droit de la moto, retirez les 5 boulons de carénage illustrés sur les photos 1 à 5 à l'aide d'une clé Torx T25 / douille.
- En utilisant le même outil pour toutes les étapes restantes, retirez le boulon fixant les deux côtés du carénage ensemble, comme indiqué sur la photo 6.
- Retirez les 4 boulons de carénage intérieurs inférieurs comme indiqué sur la photo 7, puis les 4 boulons de carénages intérieurs supérieurs comme indiqué sur la photo 8.
- Retirez doucement le carénage côté droit, puis répétez les étapes précédentes pour le carénage côté gauche.

R&G

Unit 1, Shelley's Lane, East Worldham, Alton, Hampshire, GU34 3AQ

Tel: +44 (0)1420 89007 Fax: +44 (0)1420 87301 www.rg-racing.com Email: info@rg-racing.com



- Retirez les 2 boulons reliant la protection du radiateur au refroidisseur d'huile, comme indiqué sur la photo 9.
- Disposez et fixez les bandes de mousse de protection (article 2) sur le cadre intérieur de la protection de radiateur (article 1), puis montez la protection radiateur.
- Positionnez les languettes de protection radiateur entre les points de jonction du radiateur et du refroidisseur d'huile, comme indiqué sur la photo 10, puis fixez-les avec les boulons d'origine.
- Fixez les coins supérieurs de la protection radiateur en passant un collier de serrage (article 3) dans les fentes de fixation supérieures de la protection et en les enroulant autour des points de fixation du radiateur, comme indiqué sur la photo 11.
- Remontez tous les panneaux.

ISSUE 1 - 15/07/2019 (FB)

CONSUMER NOTICE

The catalogue description and any exhibition of samples are only broad indications of the Products and R&G may make design changes which do not diminish their performance or visual appeal and supplying them in such state shall conform to the order. The Buyer acknowledges no representation or warranty (other than as to title) has been given or will apply to the Products other than those in R&G's order or confirmation and the Buyer confirms it has chosen the Products as being of merchantable quality and suitable for its particular purposes. Where R&G fits the Products or undertakes other services it shall exercise reasonable skill and care and rectify any fault free of charge unless the workmanship has been disturbed. The Buyer is responsible for ensuring that the warranty on the motorcycle is not affected by the fitting of the Products. On return of any defective Products R&G shall at its option either supply a replacement or refund the purchase money but shall not be liable if the Products have been modified or used or maintained otherwise than in accordance with R&G's or manufacturer's instructions and good engineering practice or if the defect arises from accident or neglect. Other than identified above and subject to R&G not limiting its liability for causing death and personal injury, it shall not be liable for indirect or consequential loss and otherwise its liability shall be limited to the amounts paid by the Buyer for the Products or the fitting or service concerned. These terms do not affect the Buyer's statutory rights.

R&G RACING RETURNS POLICY (NON-FAULTY GOODS)

Returns must be pre-authorized (if not pre-authorized the return will be rejected). Goods may only be returned direct to us if they were purchased direct from us (customer must prove if necessary). Otherwise to be returned to original vendor. Goods must be in re-sellable condition, in the opinion of R&G Racing. All returns are subject to a 25% restocking and handling fee (25% of the gross value exc. P&P – at the prevailing price at time of purchase). The customer must pay any and all carriage charges. No returns of discontinued products, unless within 14 days of purchase. This policy does not affect your statutory rights and does not refer to faulty goods.

R&G

Unit 1, Shelley's Lane, East Worldham, Alton, Hampshire, GU34 3AQ

Tel: +44 (0)1420 89007 Fax: +44 (0)1420 87301 www.rg-racing.com Email: info@rg-racing.com



MONTAGEANLEITUNG FÜR RAD0247 KÜHLERSCHUTZ BMW S1000RR '19-

ALLE TEILE SIND UNTEN ABGEBILDET UND GEKENNZEICHNET. BEVOR SIE MIT DER MONTAGE BEGINNEN, ÜBERPRÜFEN SIE, DASS ALLE TEILE VORHANDEN SIND.

HINWEIS: DIE VERPACKUNG DER TEILE STELLT NICHT DIE REIHENFOLGE DER MONTAGE DAR.

HINWEIS FÜR KITS MIT PLASTIKUNTERLEGSCHLEIBEN AN DEN SCHRAUBEN – DIESE PLASTIKUNTERLEGSCHLEIBEN WERDEN NICHT FÜR DEN EINBAU BENÖTIGT!

DIE ABGEBILDETEN TEILE DIENEN LEDIGLICH ZUR ERKLÄRUNG

EINE DIGITALE VERSION DIESER MONTAGEANLEITUNG KANN AUF FOLGENDER SEITE HERUNTERGELADEN WERDEN: [WWW.RG-RACING.COM](http://www.rg-racing.com)

ALLGEM. ANZUGSDREHMOMENT

M4 SCHRAUBE = 8Nm
M5 SCHRAUBE = 12Nm
M6 SCHRAUBE = 15Nm
M8 SCHRAUBE = 20Nm
M10 SCHRAUBE = 40Nm

SIE BENÖTIGEN FOLGENDES

- T25 Torx Schlüssel

INHALT DES KITS:

- Artikel 1 = 1x KÜHLERSCHUTZ (RAD0247)
- Artikel 2 = 8x 100mm SELBSTKLEBENDER SCHAUMSTOFF
- Artikel 3 = 4x 220mm KABELBINDER

MONTAGEANLEITUNG

- Beginnen Sie an der rechten Seite des Motorrades und entfernen Sie die 5x Verkleidungsschrauben, die in den Abbildungen 1-5 abgebildet sind mit einem T25 Torx-Schlüssel.
- Benutzen Sie das gleiche Werkzeug für alle übrigen Schritte. Entfernen Sie die Schraube, die die zwei Seiten der Verkleidung zusammen befestigt – siehe Abbildung 6.
- Entfernen Sie die 4x inneren Verkleidungsschrauben unten wie in Abbildung 7 abgebildet, dann die 4x innere Verkleidungsschrauben oben wie in Abbildung 8 abgebildet.
- Vorsichtig die rechte Verkleidung entfernen und die oben beschriebene Schritte an der linken Seite wiederholen.
- Entfernen Sie die 2x Schrauben, die den Kühlerschutz mit dem Ölkühler verbinden - siehe Abbildung 9.
- Die Schaumstoffstreifen (Artikel 2) passend am inneren Rahmen des Kühlerschutzes (Artikel) anbringen, und den Kühlerschutz an den Kühler ansetzen.

R&G

Unit 1, Shelley's Lane, East Worldham, Alton, Hampshire, GU34 3AQ

Tel: +44 (0)1420 89007 Fax: +44 (0)1420 87301 www.rg-racing.com Email: info@rg-racing.com



- Positionieren Sie die Kühlerschutz-Laschen zwischen den Verbindungsstellen, wie in Abbildung 10 abgebildet, dann die Originalschrauben befestigen.
- Befestigen Sie die oberen Ecken des Kühlerschutzes, indem Sie einen Kabelbinder (Artikel 3) durch die oberen Sicherungsschlitze fädeln und sie um die Montagepunkte des Kühlers wickeln – wie in Abbildung 11 abgebildet.
- Montieren Sie alle Verkleidungsteile wieder.

AUSGABE 1 - 15/07/2019 (FB)

CONSUMER NOTICE

The catalogue description and any exhibition of samples are only broad indications of the Products and R&G may make design changes which do not diminish their performance or visual appeal and supplying them in such state shall conform to the order. The Buyer acknowledges no representation or warranty (other than as to title) has been given or will apply to the Products other than those in R&G's order or confirmation and the Buyer confirms it has chosen the Products as being of merchantable quality and suitable for its particular purposes. Where R&G fits the Products or undertakes other services it shall exercise reasonable skill and care and rectify any fault free of charge unless the workmanship has been disturbed. The Buyer is responsible for ensuring that the warranty on the motorcycle is not affected by the fitting of the Products. On return of any defective Products R&G shall at its option either supply a replacement or refund the purchase money but shall not be liable if the Products have been modified or used or maintained otherwise than in accordance with R&G's or manufacturer's instructions and good engineering practice or if the defect arises from accident or neglect. Other than identified above and subject to R&G not limiting its liability for causing death and personal injury, it shall not be liable for indirect or consequential loss and otherwise its liability shall be limited to the amounts paid by the Buyer for the Products or the fitting or service concerned. These terms do not affect the Buyer's statutory rights.

R&G RACING RETURNS POLICY (NON-FAULTY GOODS)

Returns must be pre-authorized (if not pre-authorized the return will be rejected). Goods may only be returned direct to us if they were purchased direct from us (customer must prove if necessary). Otherwise to be returned to original vendor. Goods must be in re-sellable condition, in the opinion of R&G Racing. All returns are subject to a 25% restocking and handling fee (25% of the gross value exc. P&P – at the prevailing price at time of purchase). The customer must pay any and all carriage charges. No returns of discontinued products, unless within 14 days of purchase. This policy does not affect your statutory rights and does not refer to faulty goods.

R&G

Unit 1, Shelley's Lane, East Worldham, Alton, Hampshire, GU34 3AQ

Tel: +44 (0)1420 89007 Fax: +44 (0)1420 87301 www.rg-racing.com Email: info@rg-racing.com